

# veritas



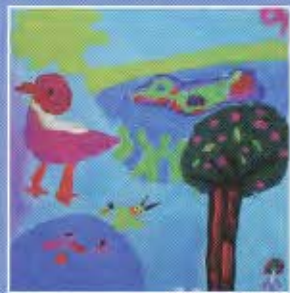
Pirate Captain Hamish Telfer, aged 5, enjoyed 'Pirate Day' at the Early Learning Centre.



New Chaplain welcomed  
Page 3



Bairnsdale commences  
Page 4



Whimsy Walk now open  
Page 6





# From the Principal...

Whilst it might be the subject of some debate, I would contend that there is no figure in the history of Gippsland Grammar of greater significance than Lorna Sparrow. Miss Sparrow arrived at the school in December 1943 to take on the role of Headmistress of St Anne's Church of England Girls' Grammar School and, though she was the fifth Headmistress, her time in that position would exceed the total of the previous four incumbents.

Indeed Lorna Sparrow held the position until 1970, continuing, from 1971 until her retirement in 1975, as the Vice-Principal and Headmistress of the amalgamated St Anne's & Gippsland Grammar School. During her 32 years of service to our great School, Miss Sparrow endured, amongst other things, teaching in the war years, the Royal visit to the School in 1953, periods of growth (and occasional decline) and the transition process which led to the amalgamation of the two Schools. She oversaw many building programs and placed a great emphasis on academic achievement, a far from universal trait in girls' schools at that time.

In 1963, Miss Sparrow's twentieth year, it was determined that the School needed an

indoor recreation space, and a building appeal was launched in April 1964 with the hope of raising £30,000, a huge sum in those days. With the support of an appreciative School community, and the hard work of Miss Sparrow and the appeal committee, this sum was raised by July of the same year (just three months!) and in April 1965 the Foundation Stone was laid. The building was opened in March 1966 and, appropriately enough, named the Lorna Sparrow Hall.

For nearly 40 years, the Lorna Sparrow Hall has served as the School's largest indoor space, and has been the centre of School life, witness to many great musical or theatrical occasions and speech nights and still the scene of our very happy Fellowship gatherings each week. It has also served to remind us, since her retirement in particular, of the enormous contribution made by 'Sproggs' (the students' affectionate name for Miss Sparrow – but always out of earshot).

Many of our Old Scholars still remember Miss Sparrow well, and though a little in awe of her, speak of her with great fondness and respect. This year, the School Foundation has announced its intention to

raise \$100,000 to refurbish the Lorna Sparrow Hall, and I am delighted to take this opportunity to remind the School community of the debt which it owes to Miss Sparrow and to encourage you to support the appeal.

Plans for the refurbishment are still in preparation, but in addition to fixing the ceiling, and some general painting and decorating, I am hoping that we can add some amenities to the Hall which will make it more flexible as a venue for functions of various types. In terms of our total capital development campaign, this is not a costly item, but in terms of the history of our School and the need to respect the past whilst we prepare for the future, it has enormous importance and I commend the Foundation's initiative.

*Mike Clapper*  
Principal

*Acknowledgement: Information for this article was found in the publication "Life at St Anne's, Gippsland Grammar School and STAGGS" by Ann Andrew.*



## Mathematics

**It's fair to say that Year 9 student Dan Candy is now one of the world's elite Mathematics students.**

Dan was placed in the top 0.3 percent of students who competed in this year's Australian Mathematics Competition which attracts students from over 20 countries around the world.

This year more than 433,000 students from 3669 schools entered worldwide.

This is the second occasion on which Dan has taken out a prize in this competition, having also succeeded in 2003.

Participating in an enrichment program, Dan has also this year entered in the prestigious

Australian Mathematics Challenge, which involves extensive problem solving.

Head of Mathematics, Gordon Cowling, praised Dan's work ethic and said he expected him to enter the Intermediate Mathematics Olympics next year, with the chance of being selected to take part in the next Australian Mathematics Olympiad.

Students from both Gippsland Grammar's senior and junior campuses were encouraged to participate in this year's Australian Mathematics Competition.

High Distinctions were awarded to Jamie Dawkins (Year 8) and Kari Matthews and Sarah Christie, both Year 7.



Jamie was also presented with the Prudence Award for the most consecutive correct answers within the School.

The competition, now in its 28th year, is the largest of its kind in the world. Last year it successfully expanded to primary schools.

Photo: Gippsland Grammar's Mathematics whiz, Dan Candy, inspires some of the Junior School students who were recognised with Distinction certificates in the recent Australian Mathematics Competition.





# Welcome to our new Chaplain

**Sue Jacka is the new chaplain at Gippsland Grammar. She replaces Rev'd David Jones who accepted a position as Chaplain at Geelong Grammar's Timber-top campus.**

Sue brings many years of experience in teaching and in ministry to Gippsland Grammar and was inducted by the Bishop of Gippsland, the Right Rev'd Jeffery Driver. She was previously employed at Mirboo North Secondary College where she taught

English and Media and co-ordinated the special needs and integration program.

Sue has been actively involved in various forms of youth ministry for many years, including church youth groups, volunteering on Theos Youth Outreach programs in Echuca and then Lakes Entrance and working for Scripture Union.

More recently Sue has completed ministry placements at the Mirboo North and Morwell Anglican parishes.

Sue is enthusiastic about her new position which she believes will allow her to draw on her experience working with young people and her counselling and ministry skills.

She is very keen to create bridges which allow people to find and develop faith in this complex world.

Sue is married to Ross and has four children ranging in age from 23 to 14.

Photo: Our new Chaplain, Sue Jacka, with Bishop Jeffery Driver and Principal, Mike Clapper.

## "The will to show you care"

- leaving a bequest to Gippsland Grammar

*The School that did so much for you, or a member of your family, by providing both education and lasting friendship will benefit from your gift.*

*Your thoughtfulness now will ensure that future students will be able to share the advantages of being part of the Gippsland Grammar community.*

*If you are interested in the Bequest Program and would like to know more, please contact the Development Office on 5143 6315.*

*If you have already made a bequest, please let us know so we can thank you personally, and ensure your wishes are carried out.*

*All correspondence is completely confidential.*





# East Gippsland Campus moves ahead

The last few weeks have seen enormous change in the landscape of our new campus in Bairnsdale. All earthworks have been completed and the shell of the main building is now standing. Much of the building was pre-fabricated offsite and transported for installation.

The new campus is situated just 2 kilometres from the centre of Bairnsdale on a 10-acre block of land overlooking the Mitchell River Backwater. It is adjacent to the Clifton Waters Retirement Village on the Wy Yung road and close to the new Eastwood Estate.

We recently held an orientation day for all new students who will commence at the campus in 2006. The students and their families were introduced to staff and were able to look at the building works which are now well under way. After initial delays in the building process we are confident that the campus will be open for the start of the new School year.



## Big Band on 'Macca'

**Our Big Band had its biggest audience yet when it performed live on 'Macca in the Morning' on Sunday 30 October as part of the regional ABC 70<sup>th</sup> anniversary celebrations.**

The Band was asked to perform at very short notice, with the gig confirmed only the day before the broadcast. The short notice did not deter our enthusiastic musicians. They performed brilliantly and sounded terrific on

radio. The program was broadcast nationwide, overseas on shortwave and through internet streaming.

Congratulations to everyone involved with the early morning program – which just happened to take place on the first morning of daylight savings!

*Colin Iversen*  
Head of Music



Photo courtesy ABC Gippsland - <http://abc.net.au/gippsland>



## **Eric Rowley MBE (November 6, 1915 - May 29, 2005)**

**Eric Rowley truly loved Gippsland Grammar, and to say his school involvement had an impact on the institution it is today, is an understatement.**

Eric Grant Gordon Rowley, MBE, born on November 6, 1915, passed way on May 29, 2005.

He was best known for his generous nature, and his affection for Gippsland Grammar began in the very early days before there was even a school. Interested in the efforts to establish



the Gippsland Grammar boys school, Mr Rowley and his wife Mollie attended the laying of the foundation stone at the McGhee St. site in 1961.

Later, both of the couple's children, Grant and Warren, were to be educated at Gippsland Grammar. Grant (deceased) was enrolled from 1964-1970 and Warren from 1967 to 1973.

In 1967, Eric Rowley was appointed to the Building Fund Appeal Committee as a shortage of facilities was hampering the school's development. He was one of the loyal supporters who spent many long hours personally canvassing for financial support for the school. A target of \$60,000 was to be raised over five years. For his willingness to perform this thankless task, the school must be forever indebted.

Over many decades, even long after his children had completed their education, Mr Rowley held many positions on School Council, the Building and Grounds Committee and the School Finance Committee and as a Founding Member of the Foundation. He retired from all school committees in 1993 saying, "It was a privilege to have served the school community as I

did, working with Diocesan Bishops, Principals, staff, parents, students and fellow councillors."

In 1983 his great gift to Gippsland Grammar was recognised when a new set of classrooms at the Garnsey Campus, along Dawson Street was named the Eric Rowley Wing. He saw this as a huge honour, which was, so it seems, only one of many. In the same year he was named in the Queen's Birthday Honours List and awarded an MBE for his services to the dairy industry.

After serving in WW2, Mr Rowley turned his efforts to farming at Denison. He was to become heavily involved in the Maffra Herd Improvement Centre where he was a founding director and honoured by the naming of yet another building, the Eric Rowley Herd Improvement Centre, in North Melbourne.

He was a dedicated church man and in May 2001, his life appointment as an honorary Diocesan Lay Canon of St Paul's Cathedral Sale was conferred. He was also a Justice of the Peace.

During the last chapter of his life he purchased a computer and wrote his own "life history" in which he modestly assigns credit for all his achievements to his wife and family.

Eric Rowley was a noble, down-to-earth family man with a big heart who worked hard for what he believed and loved every minute of it.

Eric and Mollie were a devoted couple and were married for 52 years, had two children and five grandchildren. Mollie predeceased Eric in 2003.

## **Joe Carmody: legendary coach and remarkable man**

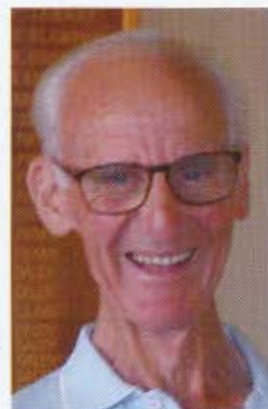
**Joe loved his sport, and as a boy in Colac, he played football, tennis and district cricket; however, he really excelled in athletics, concentrating on the 880 yards event. Unfortunately, his athletics career was cut short by an accident while riding his pushbike. Joe was left in a**

**coma for three weeks, had two broken legs and a slipped disc. While his running career was over, Joe's passion for athletics was still strong. He turned his energies to coaching, not just athletics, but also football and basketball.**

In addition to coaching the Yallourn/Newborough Football Club for fifteen years, Joe coached young runners for over fifty years, including more than 30 National Champions and three Olympians. Over the past four years, athletes at Gippsland Grammar have been truly fortunate to have received the benefits of his wisdom. Joe believed training should be about quality not quantity, and runners consistently remarked that Joe taught them how to run properly.

Tributes to Joe at his funeral all emphasised his care for the total person. He was genuinely interested in his runners' personal development, including their achievements away from the track. He loved to share stories about the feats of his runners; he could talk for hours about various races they had won or the improvement they made.

In 1957, he became the founding president of the Yallourn/Newborough Athletics Club. His presidency continued until his death. In 1975, Joe was granted life membership of the Yallourn/Newborough Athletics Club. A Gippstar Special Achievers Award followed in 1988 and then in 1991 the athletics track at Newborough was named after him. In 2001, Joe was made a life member of Athletics Victoria.



There can be no doubt that Joe's expertise, encouragement and friendship will be greatly missed at Gippsland Grammar. He clearly cherished the time he spent with our young athletes, but we were the ones who were truly fortunate. He was a remarkable man and legendary coach whom we were privileged to know.



# Whimsy Walk



**Whimsy Walk at St Anne's campus is now open! Created by Junior School students, under the watchful eye of Metung artist, Michael Morgan and art teacher, Gail Noble, this group project has enhanced the developing 'atrium' area outside the Library.**

Funded by the Gippsland Grammar Foundation through the Lorna Sparrow Fellow in Residence program, students attended art sessions with Michael, where he assisted with drawing technique and design. The three week program culminated with

the students creating painted panels for the covered area at the School. The panels were painted with exterior and archival acrylic paints and mounted for permanent display against the red brick walls.

Each student contributed to the project, the result being a colorful display of birds, beasts and objects, dreams and fantasy.

The official opening took place on Friday 11 November and we congratulate Michael, Gail and especially the Junior School students for creating such a beautiful, 'whimsical' space.



## Family hono



**It was a huge family affair when the School 34<sup>th</sup> birthday this year.**

All students from both campuses, as well as parents, teachers and prominent members of the school community came together under the roof of senior school's Gymnasium to honour the late Bishop David Garnsey who founded the school in 1961 and after whom the hall was named.

The son of Bishop Garnsey, the Rev'd George Garnsey of the Hunter Valley, was welcomed as guest speaker and he opened the hall's recent extension and renovation.





# Sensational Soiree

The Holey Plain homestead was the venue for the Foundation's September Soiree. Over 160 guests enjoyed the opportunity to spend an evening at one of Gippsland's majestic old homes and in doing so, helped raise over \$11,000 for the Building Fund.

It was wonderful to see Old Scholars and past and present parents enjoying the party-like atmosphere. Guests enjoyed entertainment

by Peter Bennett on guitar and participated in fundraising games and a mini-auction.

Our thanks are extended to Richard and Thea Crooke, who opened their beautiful home for the evening.

Photo (L to R): Pictured at the Soiree are Adele Gordon, Dallas Andrew, Thea Crooke, Leigh Gordon, Ann Andrew, Richard Crooke and Jenni Demarte.

## oured at commemoration service

Photo: Reverend George Garnsey with his sisters, Janet and Win.

Photo (right): Fairlie Kermode, Joan Peirce and Peter Brand enjoyed Commemoration Day celebrations.

Photo (below right): Foundation Chairman Philip Davis presents a cheque for \$500,000 to Principal Mike Clapper.



celebrated its The Bishop of Gippsland, the Right Rev'd Jeffery Driver, dedicated the building which can now seat more than 800 people and accommodate the entire school.

and present community, As the rain pelted down we gave thanks to the many people who worked so hard to renovate the hall so that the whole school could come together to celebrate our annual day of commemoration. The hall is proving to be an excellent asset to the school and the community as a whole, with a new fully-equipped stage and upgraded sound and lighting systems.

Among the special guests were George's sisters, Win and Janet,

who were pleased to be able to celebrate their father's memory. Win attended St Anne's for several years and caught up with some of her old schoolmates at the morning tea following the service. Everyone, including all of our 815 students, indulged in the traditional birthday cake.

The Commemoration Day service also gave Foundation Chairman, Philip Davis, the opportunity to hand over a cheque for \$500,000 to Mr Clapper. The money represented the target achieved for the Capital Development Appeal started three years ago.



# Books for Sri Lanka

To celebrate Children's Book Week this year, and as a Social Service activity, the children at the Junior School sent a box of new books to the Ave Maria Convent Branch School in Negombo, Sri Lanka for its library.

The books were purchased using money collected during Numeracy Week. Students from Bass, Mawson, Bradman and Kingsford-Smith participated in a Money Trail. Each child brought some coins to school. These were pooled to provide the basis for many numeracy activities. They sorted the coins, measured the length of all the coins laid out end to end; counted the number of each



(L to R): Amy Harrison (Year 6), Meghann Gordyn (Prep), William Jones (Year 1), Julia Lee (Year 2) and Eloise Gordon (Year 6) with a selection of the books bound for Sri Lanka.

denomination; and made some graphs of their findings. The children also looked at the minting dates of some of the coins. The students then decided to use the coins to buy the books for the girls in Sri Lanka.

The students helped select the books which

included a variety of information books, the complete Deltora Quest series and some Australian picture story books.

It was a wonderful opportunity for our students to share books with children who do not have the resources that we enjoy here.

## Junior Art Show

Gippsland Art Gallery Education Officer Liz Thorn officially opened our Junior School Art Show on Friday 9 September. Once again this annual art spectacular impressed all visitors.

According to Head of Junior School, Garry Gray, the work produced by the young artists was nothing short of amazing. He said students throughout the school and at the Early Learning Centre had worked on their masterpieces for months.

Each class uses a different medium and boasts a different theme, ensuring the show has something for everyone.

Junior School Art teacher, Gail Noble, helps all students appreciate art in every form and opens their minds to encourage the creation of amazing masterpieces.







# Japan Trip

During the September holidays, a group of Year 5 and 6 students travelled to Japan for nine days, led by Mrs Jan Chalmer and assisted by Mrs Merridy Ingrouille, Mrs Di Rowarth and Mr Andrew Nicholas.

Students experienced both ancient and modern Japan, visiting the cities of Kyoto (Japan's capital for 1200 years) and Tokyo. Activity highlights included a karate lesson (the students' photo made Tokyo newspapers!), watching a Sumo Tournament, a wooden boat ride down a gorge, Tokyo Disneyland and Himeji Castle.

The students were wonderful ambassadors for their School and country, and the staff were proud of the manner in which they conducted themselves.

## Japanese sister school

Do you remember the feeling of emptiness when the girl you hosted from Hikarigaoka Girls' High School, who had stayed with you for five weeks was about to board the bus to return to Japan? Her sad face showed you just how much she had become part of your family and how much she had grown to love you. Would you ever hear from her again?

In fact, many people from Gippsland Grammar and Hikarigaoka have kept in contact and have shared the milestones of their lives. The link between the two schools is still as strong as ever. Who would have known that the slender line that linked our schools in the beginning would multiply and become a large net, stretching out and encompassing so many lives?

This year students from both schools have made a 'zenbatsuru' (a chain of 1,000 paper cranes). This chain was made as a reminder of the mutual desire of students and staff from both schools to live in a peaceful world and is particularly significant in this year which marks the 60<sup>th</sup> anniversary of the dropping of



atomic bombs on Hiroshima and Nagasaki and the end of World War II.

The incomplete chain of cranes, which was made from recycled paper, was sent to our sister school, Hikarigaoka, where it was completed and taken to Nagasaki in October.

The 'zenbatsuru' also acts as a symbol of

the bond between our schools. We have found that by discovering more about each other and by building a wider family connection, our friendship has deepened and the tears we shed are from love rather than fear and hatred.

Photo: Principal Mike Clapper with students Joel Keenan, Lester Goold, Georgia Banks and Alison Williams.





## New Early Learning Centre ready for 2006

**A new state-of-the-art Early Learning Centre (ELC) currently under construction on the St Anne's campus will be ready in time for the new school year. The new facility will offer children, aged between three and five years, a positive learning environment, and the best possible start to School. The ELC is located opposite Sale Police Station in York Street, forming part of the infant precinct.**

With two main rooms the new facility will be capable of accommodating an increased number of children and give parents greater flexibility when it comes to educating their pre-schoolers.

The centre will open Monday to Friday and run full-day classes for three-year-olds and four-year-olds side by side. The high

quality education program will remain the same with the pre-preps utilising School resources and specialist lessons.

The pre-prep curriculum

includes specialist music and art classes as well as a weekly "buddy program" where the children spend time with the Year Five students, a weekly library visit and a Perpetual Motor Program.

Photo: Gippsland Grammar Early Learning Centre Director Lisa Burgess checks on the progress of the new building with youngsters Hamish Telfer and Ella Baker-Horan.



Photo: "Ships Ahoy" - young pirates, Andrew Gray and Alice Jones at the ELC 'Pirate Day'.



### Emma Allchurch (2003)

Left School to enter the convent. She recently sent an invitation to her former teachers to attend her Ceremony of Temporary Profession, the first stage of becoming a nun. The ceremony was held in Riverstone, NSW. Emma will now be known as Sister Mary Justin.

### Alan Boyce (1978)

Finished school in Maroochydore and spent some eleven years with Telecom. During this time he trained to become a Microsoft Certified Technician and completed a Bachelor of Science in Computer Science. Alan now sells residential real estate for PRD Nationwide in Noosa and invites any old school friends to look him up when visiting sunny Queensland.

### Carol Buchanan (Vardy 1973)

Lives at Tom Price in WA and works in the Environment Department at Pilbara Iron. In the years after leaving School, Carol worked in solicitors' offices, opened a curtain shop in Echuca and then lived on a farm near Rochester. In 1990 Carol and her family traveled around Australia to Perth. The family moved to Telfer (a remote mining town) for five years before moving to Tom Price. Carol has two sons, Scott and Nicholas.

### Marissa Harrison (1996)

Attended Griffith University on the Gold Coast and graduated with a Bachelor of Nursing in 1999. Marissa, who works as a Registered Nurse, was married in 2002 and now lives in Brisbane.

### John Lethlean (1976)

Trained as a journalist at The Age and worked for the paper until early 1982. Whilst traveling in Europe, John developed a keen interest in food, restaurants, wine and dining. He operated a small business in the food industry for six years and ran a café and catering business for four. It was during this time that John was approached to write restaurant reviews at The Melbourne Weekly.

John has been back at The Age for about eight years, as a writer and section editor for Epicure. He also does freelance restaurant-related writing for The Age's various sections and Australian Gourmet Traveler. John made his television debut this year in a one-off role as 'The Secret Reviewer' for Network Seven's 'My Restaurant Rules'. John is married to lawyer, Margaret Neal, and has two children, Sarah and Harry.

### Roger Noden (1978)

Lives about one minute from his favourite surfing spot, 'The Bluff', at Lake Tyers Beach. After leaving school, Roger built two deep sea fishing boats and went to sea, fishing. He qualified as Master and Engineer before transferring to an oil rig supply vessel, where he upgraded to trading Master. Roger studied martial arts for twenty-five years, has three black belts and holds an instructor's certificate for traditional Tae Kwon Do. Now working offshore, Roger also runs a small diving maintenance service in the Gippsland Lakes area. Roger is married and has two adult children. He recently supplied us with some old school photos from his boarding days. Old Scholars from the 70's may recall the school socials where his band, 'Crystal Wattage', performed. In 1976 the

# Out and About

band received some anonymous 'fan mail' after one performance. Roger would love to know who sent him the letter. If anyone has any clues, please contact our Development Office!



Photo: 'Crystal Wattage' performed at School socials in the 70's. They were (L to R): Roger Noden, Ted Harrison, Jamie Lowe, Anton Fullerton, Rod Hannington, Rutherford Bulmer and Jacinta Gasgoine.

### Wendy Potter (1977)

Attended Holmes Commercial College in 1978 and worked for AGC until 1984. She then worked and studied for 10 years until the birth of her son, Kristopher, in 1994. Wendy now lives in Melbourne and is studying for her Diploma in Accounting at TAFE.

### Jonathan Rayson-Hill (1988)

Has been co-owner of the Prince Alfred Hotel in Bay Street, Port Melbourne for the past two years. The

hotel, which has been newly renovated, has a friendly 'pub' atmosphere and offers great food and wines. Old Scholars are welcome to drop in for a drink some time – you'll find Jonno behind the bar! The Class of 1988 will hold a reunion at the hotel in January 2006 – see details on Ad below.

### Shae Trewin (1998)

Graduated with a Bachelor of Arts (Hons) from The University of Melbourne with a double major in Psychology and History and Philosophy of Science. Shae married in 2003 and moved to the USA to reside at Yale with her husband, who is studying for his Ph.D. Shae is the manager of the Historical Scientific Instruments Collection at the Peabody Museum of Natural History at Yale. She is in charge of 3000 objects, the oldest being a 15th century astrolabe. To supplement her work, Shae is currently completing a Master of Cultural Heritage and Museum Studies by correspondence from Deakin University.



Photo: Shae Trewin is in charge of 3000 objects at the Peabody Museum, including these 18th century Armillary Spheres.

## A reunion for the Class of 1988

will be held at the 'Prince Alfred Hotel'  
355 Bay Street, Port Melbourne  
on Sunday 22 January 2006 2pm – 5pm



Partners and family welcome  
For further details please contact  
Anna Aughterson on **9853 2798**  
or email **aapr@tpq.com.au**



# Gymkhana



**Bairnsdale Pony Club hosted the East Gippsland Secondary Schools Gymkhana during Term 3, with 19 teams representing eight schools from the local area.**

Our riders competed against students from Swift's Creek, Orbost, Lakes Entrance, Nagle College,

Maffra Secondary College and Sale Catholic College, in four different phases – show jumping, obstacle course, dressage and novelty events. The aim of the day was to allow students to compete in a relaxing environment, have fun and meet other students.

The School entered two

teams and some students competed with other schools in composite teams.

Riders were: James Boulton, Todd Bromwich, Stephanie Bond, Clare Chapman, Molly Connolly, Renae Cooke, Kahli Higgins, Nikita Higgins, Denielle Saunders, Louise Sundermann and Alison Williams.

Gippsland Grammar (Team 1) won the day with 280 points over Nagle College with 255 points and Orbost Secondary College with 214 points.

Photo: Top riders - Gippsland Grammar Team 1 (L to R): Nikita Higgins, James Boulton, Molly Connolly and Todd Bromwich.



# Equestrian

**In April this year, eight members of the Equestrian Group successfully competed at the Inter-School championships held at Werribee Park National Equestrian Centre.**

This is always a popular event as it offers a program that includes many of the equestrian disciplines and hosts 550 riders over three days.

Each of our eight riders placed in an event and performed professionally, as they have done so many times before.

Beautifully turned out, the riders were Kylie Lilburne, James Boulton, Stephanie Bond, Alyce Hortsman, Olivia O'Connor, Rebecca Horstman, Kahli Higgins, and Nikita Higgins.

# Shooting to the top

**In September this year, Gippsland Grammar won gold at the Bendigo State Schoolgirls and Schoolboys Clay Target Competition. Our 'down the line' team out-shot teams from across Victoria. The team consisting of Brooke McMillan (Year 11 – Team Captain), Brendan Bermingham (Year 12 – Team Vice Captain), Christian Boyle (Year 11) and Lachlan McMahon (Year 9) scored 98 from a possible 120 to win the teams State Title.**

As well as the outstanding team result, our individual shooters

ranked extremely well. Year 9 student, Kim Speechley, won third place in the Junior Girls event and Brooke McMillan, was runner-up in the Senior event.

Brooke is planning to train with Commonwealth Games representative Webley Hirt at the Traralgon Gun Club, with the aim of representing Australia in Skeet Shooting at the 2008 Olympics.

Christian Boyle has recently returned from Brisbane where he represented Australia at the Oceania Pistol Shooting Championships. Christian, who



was the youngest competitor in the field, competed in two open age events. He finished twelfth in the Men's Air Pistol and ninth in the Men's Rapid Fire. This was an outstanding result for such a young competitor. Christian

plans to continue shooting and he too hopes to compete at Olympic level in the future.

Photo: (L to R): School shooters Kim Speechley, Christian Boyle, Brooke McMillan, Lachlan McMahon and Brendan Bermingham.



## Gippsland Grammar

PO Box 465, Sale Victoria 3853 Telephone (03) 5143 6388  
Facsimile (03) 5143 6347 Website [www.gippslandgs.vic.edu.au](http://www.gippslandgs.vic.edu.au)