

veritas



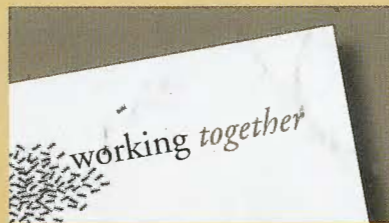
Three generations of the Crooke family enjoyed Junior School Grandparents' Day.

Pictured (L-R): Patricia Crooke with her son, old scholar Richard Crooke and granddaughter, Sophie (Year 6).

More photos – see back page.



Music Tour of NSW
Page 5



2005 Annual Giving Appeal
See enclosed brochure



Capital Development plan announced
Page 3



From the Principal...



I have now had a few months to 'settle in' to the school and have discovered just what a vibrant and exciting community Gippsland Grammar is. The students certainly have every opportunity to pursue their interests, be they sporting, cultural or community service and there is an emphasis on striving for excellence, whatever their chosen endeavour.

This comes about because the staff are dedicated and because parents are supportive but most of all because the students themselves are remarkable, accepting and building upon a tradition of involvement and mutual support which is a delight to see in an age when there is often great cynicism about the younger generation. Whether it be drama nights, music concerts, presentation balls or athletic carnivals the students are so encouraging of each other that the environment is one in which each person can 'have a go'.

It is somewhat humbling to come into such an environment as a leader and to wonder what I might be able to add to an already highly successful school. However, I have been working over the last few months with the School Board and Executive on a five-year Capital Development Plan designed to provide infrastructure improvements whilst working towards a sustainable enrolment pattern. Details of this plan are available elsewhere within this edition of Veritas and I look forward to sharing the fulfilment of this vision with you over the next few years.

A central feature of the plan is the establishment of a new primary campus in East Gippsland. We have held a number of public meetings and there is clearly a great deal of local support for the venture. We have now selected a site for the new campus which will be a 10-acre block of land overlooking the Mitchell River Backwater and adjacent to the Clifton Waters Retirement Village. This is a beautiful site just 2 kilometres from the centre of Bairnsdale on the Wy Yung road and close to the new development in the Eastwood Estate. We are hopeful of being able to open the campus in 2006, though we are currently at the stage of seeking planning permission from the Shire Council and this is not an entirely predictable process! We have over 50 expressions of interest for enrolment at this stage and the plan is that the school should grow to between 150 and 200 students over the next five years.

Obviously, we would expect that the majority of students who completed primary school at our East Gippsland campus would proceed to the senior campus in Sale, giving greater certainty to our enrolment pattern through the secondary years.

Another exciting project which is now close to completion is the enlargement of the Garnsey Hall. We will now have room to seat all of our student body in comfort, having almost doubled the floor area. The new stage has been installed at the opposite end of the Hall and the facilities for Drama are significantly improved with the addition of an AV room at the back (the old front!) of the Hall. Storage space for up to 800 chairs is available beneath the stage and there is additional storage for exam desks behind the Hall. There are also additional exits so that movement in and out of the Hall will be safer and more efficient.

I look forward to sharing this facility with you over the coming years and working on other aspects of our Capital Development Plan. Of course, such developments do come at a cost, and we continue to hope that the broader Gippsland Grammar community will show an active interest in our fund raising efforts for Capital Development. We were particularly grateful for the recent donation of \$50,000 from the Old Scholars' Association to our Capital Campaign. Be assured, this money will be put to good use!

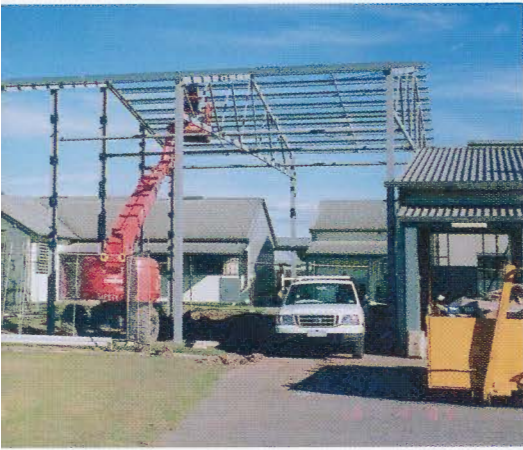
Musical Morning at ELC

Students at our Early Learning Centre recently enjoyed a musical morning with new Principal, Michael Clapper. Mr Clapper played the piano during the children's music lesson, much to the delight of his young audience. After singing all the ELC favourites, the children prepared a special morning tea.



Photo: Mr Clapper visits the ELC children

Five Year Capital Development Plan



It is with great excitement that the School Board has recently released the Capital Development plan for the next five years 2005 – 2009. This plan has arisen out of a careful analysis of enrolments and a desire to work towards a sustainable enrolment pattern for the future. We believe that it is feasible to aim for between 40 and 50 students per year level at St Anne's campus, 20 – 25 students per year level at the new East Gippsland campus and 110 – 120 students per year at the Senior campus. This would give a total enrolment of about 300 students at St Anne's campus, 150 students in Bairnsdale and 660 at the Senior campus. A grand total of 1110. This school enrolment would be supported by a pre-school of 40 students per day at St Anne's campus (two rooms) and 20 per day in Bairnsdale (one room). These would be both 3 and 4 year olds attending for up to 3 days per week. The rationale behind this aim is the maintenance of a school size which allows breadth of curriculum to be sustained at an economic cost whilst maintaining the relatively intimate nature of the school community. There might need to be an increase in boarding provision to support larger numbers attending the Senior campus from East Gippsland.

If we achieve this enrolment pattern, we will achieve a degree of financial security enabling us to maintain fees at their current levels (subject to cpi increases) and to fund the infrastructure development necessary to provide for the increased numbers.

St Anne's Campus

At the St Anne's campus, our first priority is to build a modern two-room Early Learning Centre with places for up to 40 students per day. Designs for this building

have already been prepared and it is hoped that it will be ready for 2006. The building will be located in the car park behind the Lorna Sparrow Hall and adjacent to the Prep and Grade one classrooms, creating an infant precinct in that area of the school. This, in turn, will generate stronger Prep enrolments for future years and as these flow through the school, we anticipate the need for some additional classrooms in the Junior School, which we will probably build in 2007 ready for 2008. Before this, however, we propose to provide a new Information Services Centre, an upgrade to the Lorna Sparrow Hall and improved staff facilities, all of which we hope to have done ready for the 2007 school year.

East Gippsland Campus

Phase one of the new East Gippsland campus is expected to have four classrooms, staff facilities, a school office and appropriate toilet facilities. This is currently at the detailed planning stage and we are hoping to begin building as soon as planning permission has been obtained. We expect to start with either three or four classes in 2006. Current levels of enrolment interest suggest that we may have to begin building phase two in 2006 ready for opening in 2007. This would have four more classrooms, one of which would be used as an Early Learning Centre. Stage 3 would be based around a School Hall of appropriate size and other multi-purpose facilities. We anticipate that it would be built in 2008 ready for use in 2009.

Garnsey Campus

Current numbers at the Garnsey campus are putting significant pressure on ordinary classrooms and some specialist facilities. Our first project has been the enlarging of the Garnsey Hall which is now complete, enabling us to fit all of the school into Assembly!

As the larger numbers flow into Years 11 and 12, we will also need to build some additional classrooms. These will be built in 2006 ready for the 2007 school year.

Our next priority will be to upgrade facilities in some of the elective areas. Food technology, media studies, drama and industrial technology are all growth curriculum areas in which we have

comparatively primitive facilities. This building project is scheduled for 2007 ready for 2008.

We have also included improvements to our Sports facilities as the last stage in the Development Plan, scheduled for 2009. This is an expensive venture, but one which we will be able to afford if everything else works as planned.

Boarding Facilities

As the school grows, we anticipate that there will be increased demand for boarding places and a need to develop additional facilities. Whilst the precise nature of this development has not yet been finalized, it is anticipated that we will be injecting significant funds into improving and/or expanding our boarding facility over the next 12 to 18 months.

I thank the whole community of past and present students and their parents and friends who have supported the school to enable it to contemplate a Capital Development Plan on this scale. It is a very exciting time of growth for the school and we look forward to sharing it with you over the coming years.

Leaving a bequest to Gippsland Grammar - "The will to show you care"

- *The School that did so much for you, or a member of your family, by providing both education and lasting friendship will benefit from your gift.*
- *Your thoughtfulness now will ensure that future students will be able to share the advantages of being part of the Gippsland Grammar community.*
- *If you are interested in the Bequest Program and would like to know more, please contact the Development Office on 5143 6315.*
- *If you have already made a bequest, please let us know so we can thank you personally, and ensure your wishes are carried out.*
- *All correspondence is completely confidential.*

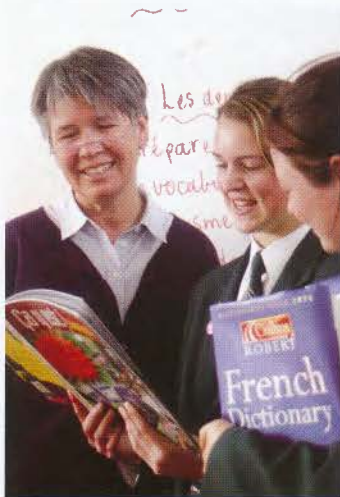
\$50,000 for Building Fund



During Grandparents' Day celebrations on Friday 29 April, the Old Scholars Association presented \$50,000 to the School Foundation. Current parent and Old Scholar, Meredith Johnston (1977), presented the cheque to Foundation Chairman, Philip Davis. The donation has given the Building Fund a tremendous boost and brings the Appeal total to \$340,000.

Photo: Old Scholar, Meredith Johnston and Foundation Chairman, Philip Davis.

2005 JAT Beard Travel Scholarship



Each year the Gippsland Grammar Foundation awards a Scholarship to provide financial assistance for a member of staff to undertake further education that would be beneficial to both the staff member and the School. It is envisaged that such education will involve travel. The funds provided are used to assist

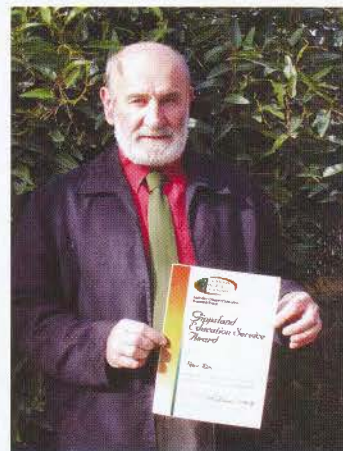
with travel expenses, course fees and accommodation.

This year, the Scholarship was awarded to Ms Laurie Elizabeth who will be traveling to Quebec City in July to enhance her professional skills as a French teacher. In her application Laurie stated that the trip will enable her to gather information for VCE courses, take photographs for future discussion, collect pamphlets and publications written in French and to experience the cultural and linguistic components of a French-speaking country first hand.

On her return, Laurie will provide the Foundation with an evaluation of her trip and the implications for the School. Congratulations Laurie!

Photo: French teacher, Laurie Elizabeth, who will visit Quebec

Outstanding service rewarded



The Australian College of Educators, Gippsland Chapter, awards recognition to outstanding teachers in schools and tertiary institutions in Gippsland.

This year, Head of Humanities and Commerce, Peter Ries, was awarded a Gippsland Education Service Award, for outstanding service in his first five years in the teaching profession.

For 20 years, Peter was a full-

time potter, gaining wide recognition for his use of ancient Middle-Eastern metallic glazes. In 1995 he completed a Masters Degree in Visual Arts at Monash Gippsland and in the year 2000 took on full-time study. He completed a Graduate Diploma of Education through Melbourne University and did teaching rounds at Gippsland Grammar, where his three children were students.

Peter, who commenced teaching in 2001, has shown himself to have the enthusiasm of the young teacher, mixed with the wisdom gained through significant experience.

Peter received his award at the West Gippsland Arts Centre on Tuesday 17 May.

Photo: Award winning teacher, Peter Ries.

Top Class Performance



Former student, Patrick McIvor recently performed at a prestigious concert in Melbourne showcasing Victoria's best VCE students of 2004.

The VCE Season of Excellence concert was held at Iwaki Auditorium in May and

was attended by over 300 people. Patrick performed old-time favourites; 'On the Sunny Side of the Street' and 'My Funny Valentine'.

Performing at Iwaki Auditorium is a particular honour, as students appear

by invitation only, having achieved an outstanding result for VCE solo recital.

Patrick commenced at Gippsland Grammar in Year 12, as the recipient of the Alan and Edna Jackson Bursary, which is awarded to assist a student who would not, under normal circumstances, be able to attend the School. Our students and staff would well remember Patrick's outstanding performance at the 2004 Prizegiving ceremony, where he performed 'Beyond the Sea' with our Big Band.

Patrick is currently working in Sale, having deferred his studies at Monash University. The whole School congratulates Patrick and hopes he continues to perform and enjoy performing!

Photo: Patrick McIvor performing at 2004 Prizegiving.

Making Music in NSW

The Sinfonia & Big Band visit to two schools in New South Wales at the start of the Easter vacation was a great success. We were delighted to be hosted by Oxley College in Bowral and The Illawarra Grammar School in Wollongong. Both schools made us feel very welcome and our students enjoyed themselves greatly.

They not only acquitted themselves extremely well musically, but in true Grammar fashion, represented themselves and the School impeccably.

Rehearsing and performing the "Lord of the Rings" Symphonic Suite with their peers from the host Schools was a highlight of the tour. We can be justly proud of our young musicians.

Colin Iversen
Head of Music





Sensational STAGGfair



The 2005 STAGGfair, coordinated by Liz Davis, has been hailed a great success. A huge crowd basked in the sun and enjoyed delicious international food and refreshments. Children enjoyed pony rides, jumping castles, hot-rod rides as well as the ever popular spinning wheel, Easter raffle and much more. A grand profit of \$33,000 was raised and will go towards purchasing items on the School 'Wish List'.



Learning to Fly



Learning to fly has never been so much fun! Students in Years 3 and 4 visited RAAF Base East Sale in February, visiting the Fire Station and Central Flying School. These excursions were part of the Integrated Studies theme 'Flight and Air', where the children investigated the properties of air and different types of flying machines.

Then, to finish their studies on a 'high', the children were treated to a special visit by Roulette pilot, Ben 'Lucky' Cartwright. 'Lucky'

dropped in to teach the children how to make and fly a paper plane.

He taught the children a number of techniques to assist their planes travel further, higher and smoother. At the end of the lesson, certificates and signed posters were presented for longest flight, best 'barrel roll', best turning ability, smoothest flight, most accurate flight and best 'loop the loop'. We were left to wonder why Ben is nicknamed 'Lucky'!

Photo: Roulette pilot 'Lucky' Cartwright

Students Rally for Relay



The Relay for Life is the biggest fundraising event in Victoria for the Cancer Council of Australia. The event is held every two years, and on April 30 the East Gippsland Relay for Life took place at the Sale Greyhound Track.

Each team fundraises prior to the event and a grand total is then donated to the Cancer Council.

In 2003 a group of then Year 8 students put together a team which in 2005 re-formed to take up the challenge once again.

The team name – 'Fully Gnarly on a Stick' – according to Year 10 student Dan McKimm, represents all the things in life worth living for, i.e. friends, family and fun times, all presented on a silver platter. Dan also crafted the team baton.

The Relay, which lasted for 24 hours, was an unforgettable experience. All participants supported each other, keeping a team member on the track at all times. Entertainment was provided by local bands and we participated in a few competitions. One of these was a jelly eating contest, won by our own Angus Cameron.

Our team raised \$2,621.65 which contributed to the overall total of \$148,000 raised by the 34 local teams involved. \$1.5 million has already been raised through Victorian Relay for Life events this year. The School team aims to beat its fundraising total in 2007 when the event is next held in Sale.

By Jack Roberts
Emma Oates
Sarah Marrocco (Team Captain)

Year 9 Learn At Telstra Dome



Year 9 students have embarked on another round of the very special Melbourne Experience again this year. Each Year 9 class spends two weeks in Melbourne attending school in their city classroom and undertaking studies of the Melbourne environment and people.

2005 has seen a change of venue for this experience. No longer in the heart of the city, the Year 9s now attend class in The Studio at Telstra Dome. While the change of venue means the students are a little further from the shopping heart of Melbourne, Telstra Dome is in a lively and engaging precinct at Docklands and offers many exciting opportunities.

Having searched for a new venue for several years, the opportunity to be at the Dome, in a large, soundproof venue overlooking the ground, has been an exciting development in the Melbourne Experience.

Traveling to Spencer Street on a V-Line train, students begin their two week experience, using public transport for all travel. Most days start in their Studio classroom, and students undertake studies in a variety of units of work: Urban Awareness, Diversity, Change Over Time, and Democratic Processes. These units require some study in the classroom and the wider classroom which is the city. Most students stay with host families and this allows them to develop a great sense of independence and maturity in navigating the city's public transport and streets.

The new venue has allowed some further development of

the Melbourne program. The students have toured the venue and enjoyed sitting in the coach's box and interchange area. They were also given an opportunity to attend a football game at Telstra Dome in the middle weekend of their stay too! The feedback from students so far has been very positive.

The move to Telstra Dome has proved to be a successful development in the Melbourne Experience, an important part of the Year 9 Program.

Jan Henry
Head of Year 9
Photo: Year 9 students at Telstra Dome.

Speech Students Awarded

A number of Gippsland Grammar speech and drama students have been recognised by the Australian Guild of Music and Speech.

Outstanding Achievement Awards have been presented to Junior School students Jack Dawson, Charles Gerrand, Sophie Crooke, Louise Barnett and Bradley Walsh as well as Senior School students Saada Malouf and Sarah Crowe.

Bradley also received a monetary encouragement award from the long-standing organisation.

The awards, only recently presented, were the result of fine performances in the 2004 public examinations.

Twenty-five other Gippsland Grammar students, taught by Liliias Lovatt, passed with honours.

PHOTO: Jack Dawson, Charles Gerrand, Sophie Crooke, Bradley Walsh and Louise Barnett are all smiles after receiving Speech and Drama awards.





Premier recognises students' achievements

Three of our students have received a prestigious Premier's Award for demonstrating outstanding achievement in the 2004 Victorian Certificate of Education.

On Wednesday 30 March, at a ceremony in Melbourne's Regent Theatre, Victorian Premier Steve Bracks recognised Doug Brumley, who completed Year 12 at Gippsland Grammar last year, and current Year 12 students Megan Kenny and Anna Steer.

While the day was hosted by the Premier, the local students also had the chance to meet Governor John Landy, Education and

Training Minister Lynne Kosky and Minister for Education Services Jacinta Allen.

Doug was presented with the highest award, a Top All Round High Achiever Award, and was also acknowledged for gaining the maximum study score of 50 in Mathematical Methods.

The East Gippsland student, son of Andrea and Dick Brumley, finished his studies as Dux of the School 2004 achieving an ENTER of 99.90, which was believed to be the best in the region. He was one of just 33 in the entire State to receive the highly regarded Premier's Award.

Mr Bracks named Megan in the best

five Victorian students for Theatre Studies, gaining a study score of 49 and Anna in the top five for Physical Education, achieving the maximum study score of 50. Both Anna and Megan undertook their respective Year 12 subjects while completing Year 11 last year, quite a testament to their dedication and commitment to their studies.

For the past 11 years the Premier has recognised Victoria's best students with such awards. Michael Bongers, who graduated from Gippsland Grammar in 2000, is our only other student to be named on the Premier's list of elite students.

VALE

Dr Alan (Graeme) McKinnon

22 June 1927 – 28 Oct 2004

Dr Graeme McKinnon passed away last year aged 77. Graeme, his wife Jill (nee Foster) and their children – Angus, Kirsty and Lachlan, have had a long association with Gippsland Grammar. In 1959 the late Geoff Webster asked Graeme to join the interim committee to help raise funds for the new School. "Graeme was given the task of approaching the tough ones," said Jill. He also served on the School Council until 1970.

In fact, the whole family was involved in fundraising for the School. Dr McKinnon's mother-in-law, Mrs AO (Ruby) Foster was an avid supporter and Jill was on the committee which raised significant funds from the sale of the renowned history and cookery book, "Is Emu on the Menu", in 1965.

The McKinnons lived at Tinamba with their children, all of whom attended the School. Graeme was a respected member of our local community, operating his dental practice in Maffra and Heyfield for over 27 years.

Without his dedication and support, the students of Gippsland Grammar would not enjoy the facilities that currently exist. Our sincere sympathy is extended to Jill and her family.

Mr Edward C (Ted) Peirce

9 June 1927 - 18 March 2005

Ted Peirce was a great supporter of Gippsland Grammar. A well-known and respected accountant and businessman, Ted was one of the great personalities of Sale. In 1959 he was asked by the Bishop to be a member of the interim committee appointed to plan the establishment of Gippsland Grammar. "The committee worked hard to get the School going," said Mrs Joan Peirce. The three Peirce children attended the School and Ted was a Member of the School Council until 1975.

In 1998, Ted and Joan moved to Mount Eliza. They enjoyed being near their family and spending time with their grandchildren.

As a founding member of the Foundation, Ted's vision for the School continues to this day. In lieu of flowers at his funeral, Ted's friends were asked to make a contribution to the Gippsland Grammar Foundation in his memory. This kind gesture was deeply appreciated and emphasized the esteem in which he held the School.

Ted's contribution was enormous and we will always remember his generosity and commitment to Gippsland Grammar. Our thoughts are with Joan, Colin, Robert and Fiona and their families.

Sporting Records

Following a few recent enquiries, we have compiled a list of School sporting records for your information. We will publish more records in the next edition of Veritas.

House Swimming

Under 13	50m Boys Freestyle	C Ford	30.10 sec	1976 ✓
Under 13	50m Girls Breaststroke	N Rawlings	41.40 sec	1990 ✓
Under 14	50m Boys Backstroke	C Ford	32.10 sec	1977 ✓
Under 14	50m Girls Freestyle	E Rawlings	31.60 sec	2001 ✗
Under 15	50m Boys Breaststroke	S Whitford	35.30 sec	1983 ✓
Under 15	50m Girls Freestyle	S Stothers	30.70 sec	1991 ✗
Under 16	50m Boys Breaststroke	S Daley	38.45 sec	1995 ✗
Under 16	50m Girls Backstroke	S Allen	33.14 sec	2001 ✓
Under 17	50m Boys Breaststroke	N Turvey	36.50 sec	1982 ✗
Under 17	50m Girls Backstroke	E Rumpff	37.48 sec	1995 ✗
Under 21	50m Boys Backstroke	C Ford	30.90 sec	1980 ✗
Under 21	50m Girls Butterfly	K Wallis	35.06 sec	1996 ✗

House Athletics

Under 13	Boys 200 Metres	H Bulmer	27.50 sec	1971 ✓
Under 13	Girls High Jump	E Jones	1.31 m	1990 ✗
Under 14	Boys High Jump	X Sellings	1.58 m	1995 ✗
Under 14	Girls Shot Put	B Kase	9.95 m	1996 ✓
Under 15	Boys 100 Metres	J Arthur	12.40 sec	1992 ✓
Under 15	Girls Shot Put	H Macleod	10.21 m	1995 ✗
Under 16	Boys 400 Metres	D Huffer	55.65 sec	2001 ✓
Under 16	Girls 100 Metres	A Cunliffe	13.50 sec	1986 ✓
Under 17	Boys 100 Metres	B Lancaster	11.60 sec	1992 ✓
Under 17	Girls Discus	R Gerrand	28.45 m	1983 ✓
Under 21	Boys 400 Metres	S Daley	53.66 sec	1997 ✗
Under 21	Girls 1500 Walk	S Osborne	10:04.06 min	1992 ✗

**In most cases, these records are long-standing. Every effort has been made to ensure that details are correct, however, if a mistake has been made, please notify the Development Office on 5143 6315*

Out and About

David Arnup (1994)

Married St Anne's campus teacher, Kate Ray, in March this year. The couple was married at the Sale Wetlands and enjoyed a lunchtime reception at Sale's new Phoenix Bar. David, who is now a Paramedic, met Kate whilst he was teaching Physical Education at the School. The newlyweds recently left for a month-long honeymoon touring Canada.



Photo: David Arnup and Kate Ray on their Wedding day.

Gareth (Gaz) Benson (1994)

Operates his own production company, Afterparty Productions. Whilst working as a media lawyer, Gaz followed his passion to create further opportunities for film and live performance. He produced three short films for Tropfest and was involved with several other short film productions in Canberra, Melbourne and Sydney. Then, furthering his interest

in intellectual property law and copyright, Gaz joined Canberra law firm Bradley Allen. While in Canberra Gaz produced an open-air film event named Fringe TV as part of Canberra's first film festival. He is involved in Canberra's Film and Arts industry and is a board member of the ACT Film and Television Council. Gaz is currently producing a 15 minute film with writer/director Duane Charles Fogwell with the assistance of a \$20,000 grant from Arts ACT. The film, 'The Milk Man', will be submitted to the Sundance Film Festival later this year.

David Hackford (1986)

Studied Law at the University of Tasmania, graduating in 1990. He completed his articles at Mahonys Solicitors in Melbourne before returning to operate Littleton Hackford in Traralgon where he works as a general practitioner with a focus on commercial, property and family law.

Katie Lawrence (Beynon 1988)

Completed a Bachelor of Arts degree at Melbourne University, majoring in Japanese. She was employed by Qantas as a Japanese speaking Flight Attendant for twelve years in the International Cabin Crew. Katie has continued her studies, completing a Masters of Arts - International Relations at UNSW and recently started Mandarin language studies. Ten months ago she transferred to Domestic Cabin Crew and is enjoying flying around Australia. Katie married Richard Lawrence at Holy Trinity Garrison Church at The Rocks, Sydney last November.

Kate O'Connor (1998)

Completed her Bachelor of Education (Primary) at Melbourne University. She graduated with honours in March and now teaches Prep at Elwood Primary School.

Cameron Olsen (1992)

Spent a year in Stockholm on a Rotary Exchange following Year 12. He completed Arts/Law (Hons) at Monash University then worked for Minter Ellison where he specialized in intellectual property. In 2001 he transferred to their London office and was appointed Senior Associate in 2004. Cameron now works in-house at Sports World International, the largest sports retailer in the UK, where he manages the legal work for various sporting brands including Slazenger, Lonsdale and Dunlop. He also oversees the sponsorship of golfer John Daly, the Wimbledon Tennis Championships and players such as Amelie Mauresmo and Tim Henman.

Brad Trease (1995)

Married Mel Minard in March this year, in the gardens of Montfort Manor, Traralgon. Brad's best man was Michael Cogger (1995) and groomsman was Aaron Logan (1995). Brad and Mel's reception was held at Premiere Function Centre in Traralgon, where Dan Ziffer (1995) was Master of Ceremonies. Brad is a chiropractor, who operates a practice in Morwell. The happy couple honeymooned in Fiji and now lives in Traralgon.



Photo: Newlyweds Brad and Mel Trease. Dave Blackney Photography.

Lee Tryhorn (1997)

Completed a Bachelor of Arts, majoring in Japanese and a Bachelor of Science (Hons), with a double major in atmospheric science and mathematics. She spent the first half of her honours year (2004) studying at the University of Oklahoma and was able to participate in rather unusual extracurricular activities, such as tornado chasing! Lee was awarded the Australian Meteorological and Oceanographic Society Prize (AMOS) for the best honours student in atmospheric science for 2004. Lee has recently commenced a PhD and is researching the effects of climate change on the Alpine Region of Victoria.

We were saddened to hear of the passing of Mr Gordon Kyle in April this year. Gordon will be remembered as the long-time bus driver on the Bairnsdale route. Gordon maintained a strong interest in the School after his retirement and we extend our sincere sympathy to his wife, Nola and children, Andrew, Merran and Stuart and their families

Angie Laidlaw (Jenkin 1973) passed away in April following a battle with cancer. Angie worked at the hospital in Sale after leaving School, and later moved to Ararat. Our deepest sympathy is extended to her family.

Old Scholar, Maris Berry (nee Cox) of Toora, passed away in February this year after a battle with cancer. Maris attended the School between 1961 and 1967 and retained strong friendships with fellow students over the years.



Junior School Grandparents' Day

Grandparents and other special guests recently enjoyed the opportunity to have a close look at the day-to-day activities of the Junior School.

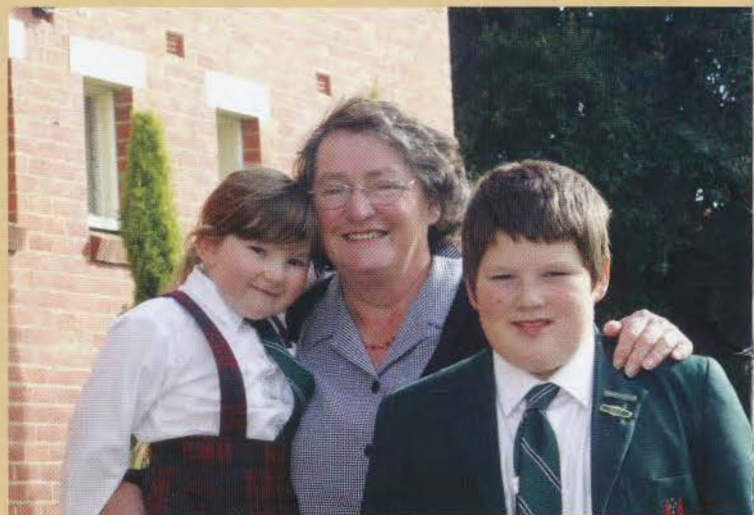
Grandparents' Day is always a special event on the School calendar and this year was no exception. Lorna Sparrow Hall was brimming with excited students and their VIP visitors!

The audience was treated to some wonderful entertainment including a solo drama recital 'Practising' by Sophie Crooke, an amusing mime entitled 'Not a Very Nice Restaurant' by James Melton and Laine Learhinan, a violin performance of 'The Blue Danube Waltz' by Emily Trigge and Ritchie Hua, and Stephanie Naidu, Sophie Crooke and Megan Jackson sang the touching song, 'Never Too Old'.

Following the Fellowship service, students were able to take their special visitors on a tour of the School and enjoyed morning tea in Blackwood House.



Marie & Don Ingrouille visit grandsons, William (Year 4) & Richard (Year 3).



Mavis McConnell with her grandchildren, Lauren (Prep) & Danny (Year 6).



Jonty Simmons (Year 5) and his grandmother, Vida, enjoying Fellowship.



Tom Johnston (Year 5) with his mum, Meredith and grandmother, Lesley Wright-Smith.



Jayden Knowles (Year 6) with grandparents Tom & Margaret Trotter.



Gippsland Grammar

PO Box 465, Sale Victoria 3853 Telephone (03) 5143 6388
Facsimile (03) 5143 6347 Website www.gippslandgs.vic.edu.au